

CHRIS VAN UFFELEN

CONCRETE

CONCRETE

CONCRETE

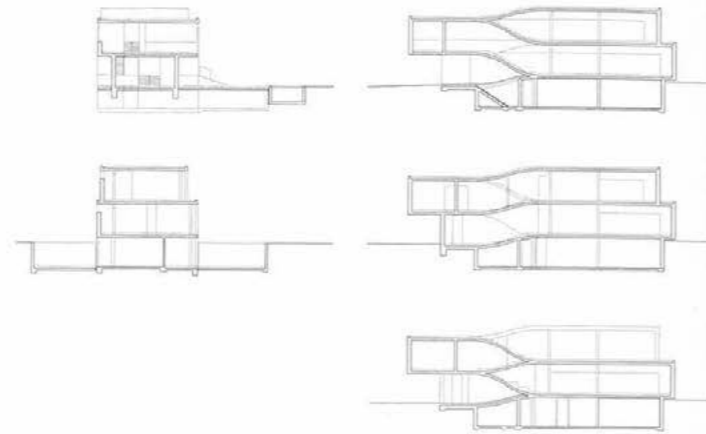
PURE. STRONG. SURPRISING.

BRAUN

UFFENHEIM, GERMANY VILLA F

ARCHITECTS: ARCHITEKTURSTUDIO PROF. MARTIN SCHROTH
 COMPLETION: 2010_GROSS FLOOR AREA: 555 M²_TYPE OF
 CONCRETE: C 25/30 F3 GRANULATION 0-16 XC4XF1XA1
 FUNCTION: LIVING_PHOTOS: JANN DÖPPERT

Suspended above an underground garage, all necessary functions are brought together inside the elongated white structure. The entrance area is located at the narrow end on the same level as the garden, while the split level principle applied to the living areas and the private section creates a continuous space. The aim of the spatial concept was to create an open interaction between the interior and the exterior. The living and garden areas flow smoothly into each other. The support structures are made of concrete and were fitted into the north and side façades as well as the ceilings. The uninterrupted curves of the roof supports the spatial continuity.



left: Sections_View from garden during the evening, right: Access to garden_ Staircase_ Living area with view of garden.

